



## Features:

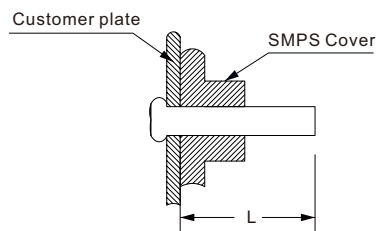
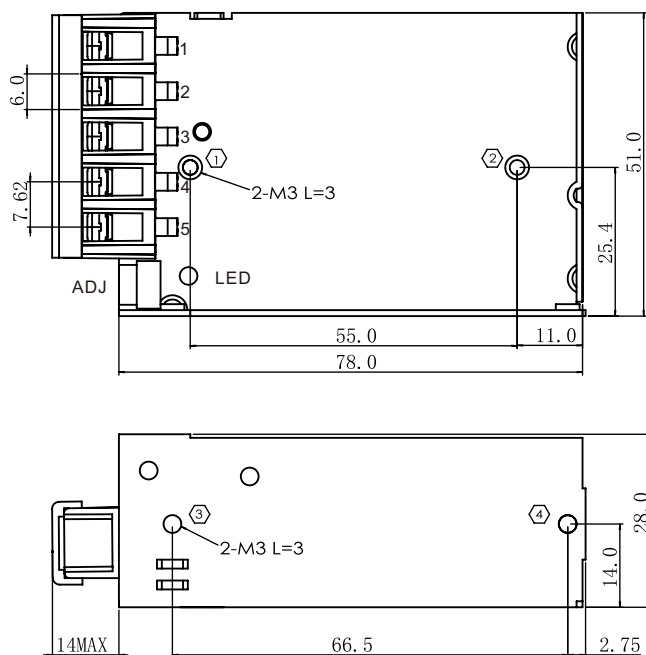
- Universal AC input range
- Withstand 300VAC surge input for 5 second
- Small size, 1U low profile
- Working temperature reach up to 70 °C
- Protections: Short circuit / Overload / Over voltage
- Natural air cooling
- Operating altitude up to 5000m
- Withstanding 5G vibration
- High reliability
- High cost-effectiveness
- LED indicator for power on
- 100% full load burn-in test
- 3 years warranty

## Specification

MODEL		SM25-5P2	SM25-12P2	SM25-15P2	SM25-24P2	SM25-36P2	SM25-48P2
INPUT	VOLTAGE RANGE	85~264Vac 120~370Vdc(refer to 'static characteristic')					
	FREQUENCY RANGE	47~63Hz					
	EFFICIENCY(Typ.)	84%	85%	85%	87%	87%	87%
	AC CURRENT(Typ.)	0.6A/115Vac 0.4A/230Vac					
	INRUSH CURRENT(Typ.)	50A/230Vac (cold start)					
	LEAKAGE CURRENT	<0.75mA/240Vac					
OUTPUT	DC VOLTAGE	5V	12V	15V	24V	36V	48V
	RATED CURRENT	5A	2.1A	1.7A	1.1A	0.75A	0.57A
	CURRENT RANGE	0~5A	0~2.1A	0~1.7A	0~1.1A	0~0.75A	0~0.57A
	RATED POWER	25W	25.2W	25.5W	26.4W	27W	27.36W
	RIPPLE&NOISE(max.)	50mVp-p	100mVp-p	120mVp-p	120mVp-p	150mVp-p	150mVp-p
	VOLTAGE ADJ. RANGE	4.75~5.5V	10.8~13.2V	13.5~16.5V	22~27.6V	32.4~39.6V	42~54V
	VOLTAGE TOLERANCE	±2%	±1%	±1%	±1%	±1%	±1%
	LINE REGULATION	±0.5%	±0.5%	±0.5%	±0.5%	±0.5%	±0.5%
	LOAD REGULATION	±1%	±0.5%	±0.5%	±0.5%	±0.5%	±0.5%
	SETUP, RISE TIME	1500ms,50ms/230Vac 3000ms,50ms/115Vac full-load					
	HOLD UP TIME	80ms/230Vac 15ms/115Vac full-load					
PROTECTION	OVER LOAD	120%~180% rated output power					
		Protection type: Hiccup mode ,recovers automatically after fault condition is removed.					
	OVER VOLTAGE	5.75~7.5V	13.8~17V	18.75~21.75V	28.8~35V	43.2~50.4V	55.2~64.8V
ENVIRONMENT	Protection type: Hiccup mode ,recovers automatically after fault condition is removed.						
	WORKING TEMP.	-20~+70°C(Refer to "Derating curve")					
	WORKING HUMIDITY	20~90% RH non-condensing					
	STORAGE TEMP.,HUMIDITY	-40~+85°C, 10~95% non-condensing					
	TEMP. COEFFICIENT	±0.03%/°C (0~50°C)					
ENVIRONMENT	VIBRATION	10~500Hz, 5G 10min./1 cycle, period for 60 min. each along X、Y、Z axes					

Safety and electromagnetic compatibility	Safety standards	Refer to UL62368-1,TUV EN62368-1,CCC GB4943.1		
	Withstand voltage and isolation resistance	I/P-O/P: 3KVac; 100MΩ / 500Vdc / 25℃ / 70%RH		
		I/P-FG: 2KVac; 100MΩ / 500Vdc / 25℃ / 70%RH		
		O/P-FG: 0.5KVac; 100MΩ / 500Vdc / 25℃ / 70%RH		
	Electromagnetic compatibility emission	Parameter	Standard	Test Level / Note
		Conducted emission	BS EN/EN55032(CISPR32),FCC PART 15 / CISPR22 ,GB9254.1	Class B
		Radiated emission	BS EN/EN55032(CISPR32),FCC PART 15 / CISPR22 ,GB9254.1	Class B
		Harmonic current	BS EN/EN61000-3-2,GB17625.1	Class A
		Voltage flicker	BS EN/EN61000-3-3	----
	Electromagnetic compatibility immunity	BS EN/EN55035		
		Parameter	Standard	Test Level /Note
		ESD	BS EN/EN61000-4-2	Level 4, 8KV air, Level 2, 4KV contact, criteria A
		RF field susceptibility	BS EN/EN61000-4-3	Level 3, criteria A
		EFT bursts	BS EN/EN61000-4-4	Level 3, criteria A
		Surge susceptibility	BS EN/EN61000-4-5	Level 3, 1KV/L-N, 2KV/L/N-FG criteria A
		Conducted susceptibility	BS EN/EN61000-4-6	Level 3, criteria A
		Magnetic field immunity	BS EN/EN61000-4-8	Level 4, criteria A
		Voltage dips and interruptions	BS EN/EN61000-4-11	>95% dip 0.5 periods, 30% dip 25 periods , >95% interruptions 250 periods
OTHERS	MTBF	≥800Khrs MIL-HDBK-217F(25℃)		
	DIMENSION	78*51*28mm(L*W*H)		
	PACKING	0.18Kg; 60pcs/ 11.8Kg/ 0.58 CUFT		
NOTE	1. All parameters NOT specially mentioned are measured at 230VAC input, rated load and 25℃ of ambient temperature. 2. Ripple & noise are measured at 20MHz of bandwidth by using a 12” twisted pair-wire terminated with a 0.1uF & 47uF parallel capacitor. 3. Tolerance: includes set up tolerance, line regulation and load regulation. 4. Line regulation is measured from low line to high line at rated load. 5. Load regulation is measured from 0% to 100% rated load 6. Length of set up time is measured at cold first start, Turning ON/OFF the power supply very quickly may lead to increase of the set up time. 7. The ambient temperature derating of 5℃/1000m is needed for operating altitude great than 2000m(6500ft). 8. The power supply is considered a component which will be installed into a final equipment. All the EMC tests are been executed by mounting the unit on a 360mm*360mm metal plate with 1mm of thickness. The final equipment must be re-confirmed that it still meets EMC directives.			

## Mechanical specification

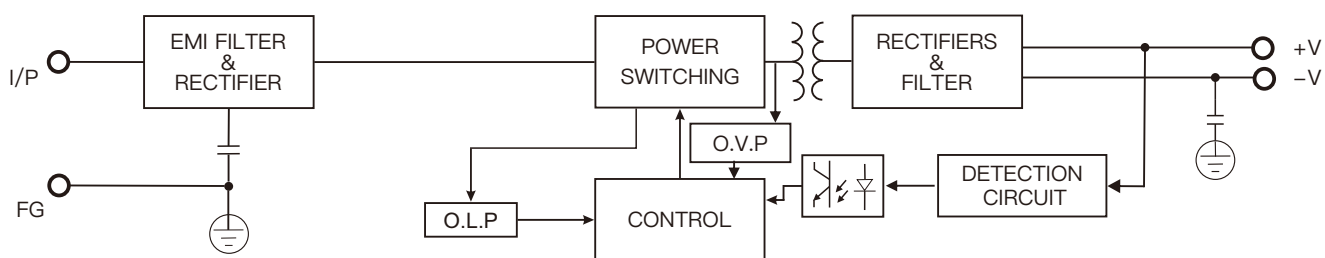


NOTE:  
Unit: mm  
ADJ:Output adjustable resistor  
Torque:M3.5, 0.8N • m Max  
TOL: ±1.00

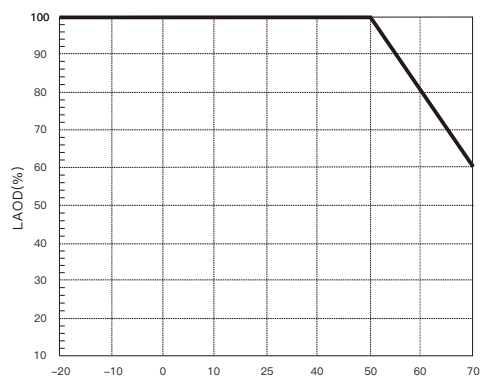
Position No.	Screw Size	L max	Torque max
1-2	M3	3mm	0.4N • m
3-4			

Screw Terminal			
Pin No.	Assignment	Pin No.	Assignment
1	AC/L	4	DC OUTPUT –
2	AC/N	5	DC OUTPUT +
3	FG		

## Block diagram



### Derating curve



## Static characteristics

